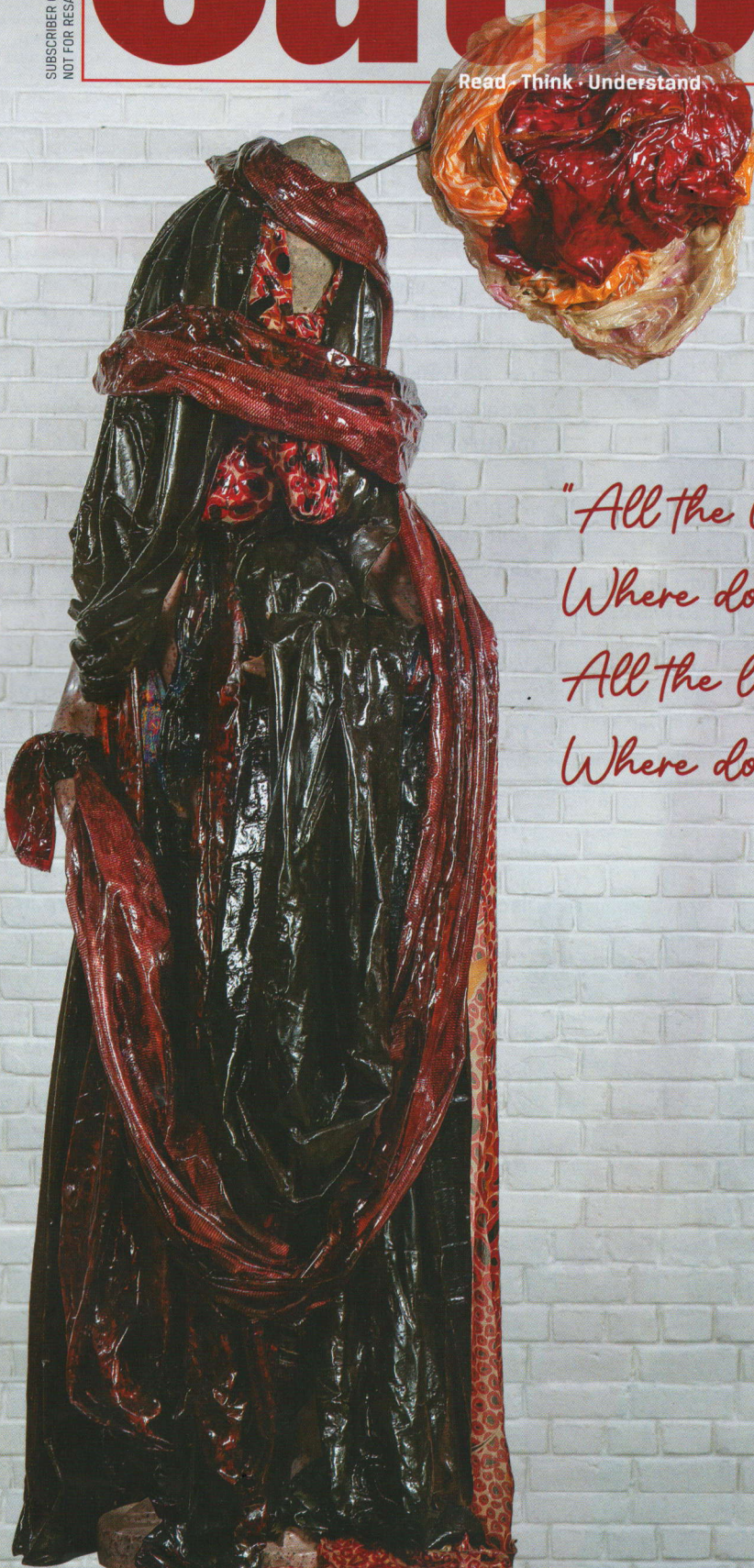


SUBSCRIBER COPY
NOT FOR RESALE

Outlook

Read · Think · Understand



*"All the lonely people
Where do they all come from?
All the lonely people
Where do they all belong?"*

—The Beatles

RNI NO. 7044/1961



81904150800010 06

EDITOR Chinki Sinha

MANAGING EDITOR Satish Padmanabhan
FOREIGN EDITOR Seema Guha
CREATIVE HEAD Manpreet Romana
DEPUTY PHOTO EDITOR Tribhuvan Tiwari
DIGITAL EDITORS George P. J., Toufiq Rashid

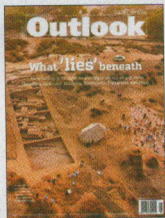
WRITERS Shahina K.K., Naseer Ganai,
Shweta Desai, Ashwani Sharma, Md. Asghar Khan,
Apeksha Priyadarshini

COPY DESK S.S. Jeevan, Swati Subhedar,
Vineetha Mokkil

PHOTOGRAPHERS Vikram Sharma, Suresh K. Pandey,
Sandipan Chatterjee, Dinesh Parab, Yasir Iqbal

RESEARCHERS Animikh Chakrabarty, Anupam
Prashant Minz, Prabhat Mehrotra

DESIGN Champak Bhattacharjee, Leela
ILLUSTRATORS Vikas Thakur, Saahil



Outlook issue
February 11, 2025

BUSINESS OFFICE

CHIEF EXECUTIVE OFFICER Indranil Roy
PUBLISHER Sandip Kumar Ghosh
HEAD OF CONVERGENCE Sayantan Dasgupta
DIRECTOR BRAND & MARKETING Shrutika Dewan
VICE PRESIDENT Diwan Singh Bisht
SR GENERAL MANAGERS Debabani Tagore,
Shailender Vohra
GENERAL MANAGER Shashank Dixit
CIRCULATION & SUBSCRIPTION Gagan Kohli
CREDIT CONTROL Manisha Mishra

HEAD OFFICE

AB-10, S.J. Enclave, New Delhi - 110 029
Customer Care: 9266855837 / 9266855636
Office Hours: 10 am to 6 pm
e-mail: yourhelpline@outlookindia.com

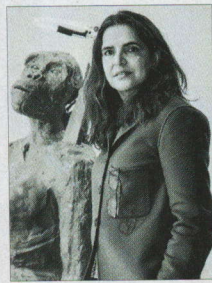
Printed and published by Indranil Roy on
behalf of Outlook Publishing (India) Pvt. Ltd.
Editor: Chinki Sinha. Printed at MP Printers
(A Unit of DB Corp Ltd) B-220, Phase-II,
Noida 201305, Gautam Budh Nagar (UP)
and published from AB-10, S.J. Enclave,
New Delhi-110 029

Published for the period of
February 12-21, 2025
Released on February 11, 2025
Total number of pages 76 including covers



POINT AND SHARE

Now, open Outlook magazine on your
smartphone instantly. Point your phone's
scanner on the code and align it in the
frame. You will be guided instantly to our
website, www.outlookindia.com This is
useful to share our stories on social
media or email them.



ON THE COVER

'Mountain Hears the
Ruffling of Wings'
Artwork by Bharti Kher
Courtesy: The artist
and Hauser & Wirth
Photo: Jeetin Sharma

ABOUT THE ARTIST

Bharti Kher studied
painting, graduating in
1991 from the UK-based
Newcastle Polytechnic.
Kher's practice is
radically heterogeneous,
encompassing
painting, sculpture and
installation. Overarching
themes within her work
include the premise
of the self as multiple.
This interlocking link
that human, animal and
matter create, lead to
works that are hybrid in
nature and material. She
allows both abstraction
and figuration to weave
through her practice
and exploits the drama
inherent in objects,
tapping into mythologies
and the numerous
diverse associations a
thing or place can carry.



10 | CRYING IN LOVE IS TO GROW IN LOVE

To be in love is to
check one's mortality
and start with the
quiver of optimism

By Suraj Milind
Yengde



16 | FRIENDSHIP LOVESHIP HATESHIP

The world is presently
battling a loneliness
epidemic, but it's
the 'well-connected'
who are the loneliest.
These days, they
are looking to make
connections at social
meet-ups

By Rani Jana



44 | BIG CITY BLUES

Queer people
find vibrancy and
welcome anonymity
in megacities but
there is a limit to the
choices they offer

By Santanu
Bhattacharya



60 | AAP REJECTED, OR BJP ELECTED?

Is the electorate voting to reject rather than
voting to elect? By Ajay Gudavarthy

70 | SCRIPTING LONELINESS

With the turn of the millennium, Indian audiences
got to see what actually happens when fairytale
romance ends and life begins on the big screen

By Apeksha Priyadarshini

Subscribe Now

