

16-30 SEPTEMBER, 2024

# Down To Earth

FORTNIGHTLY ON POLITICS OF DEVELOPMENT, ENVIRONMENT AND HEALTH

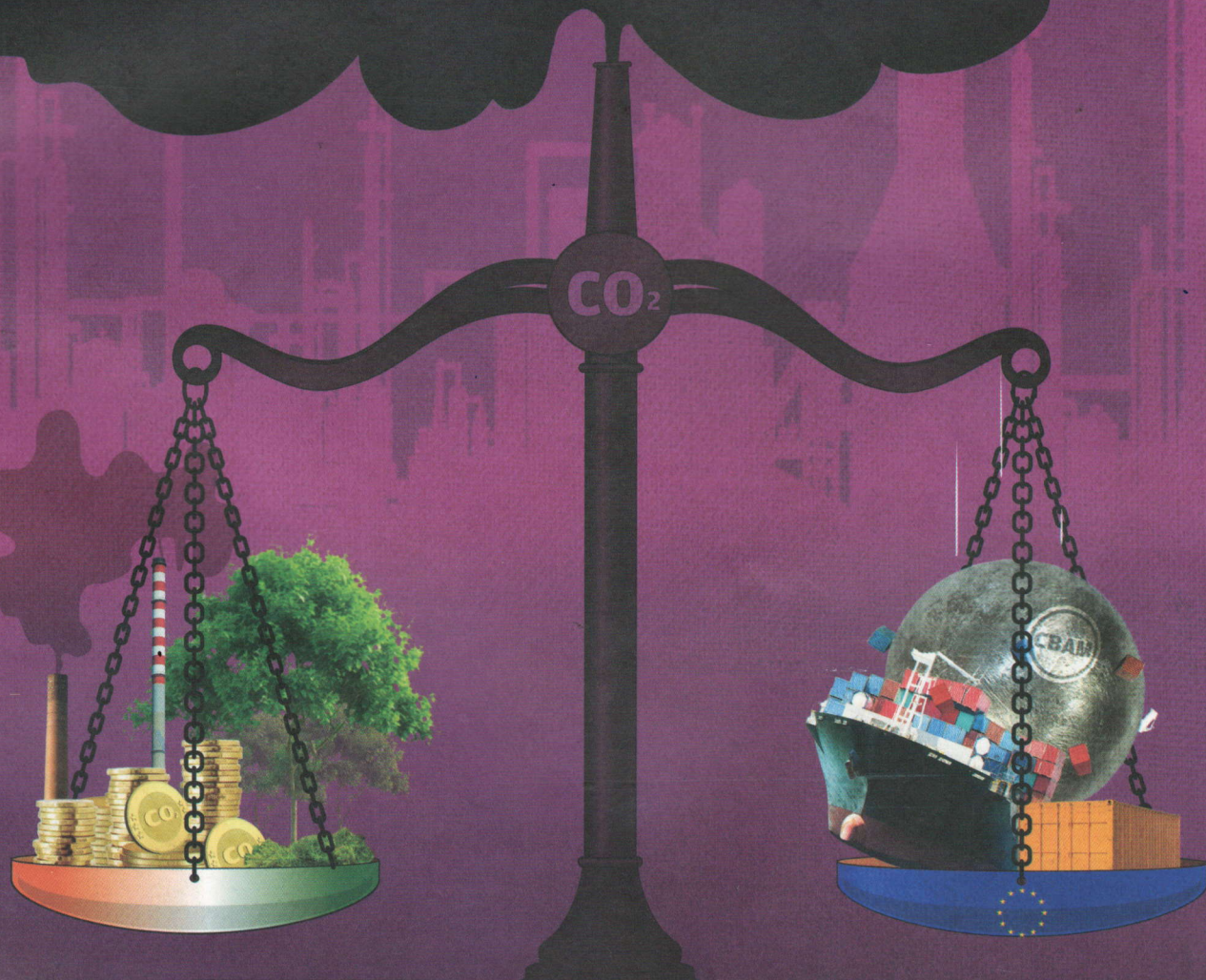
Subscriber copy, not for resale

₹80.00

OZONE DAY SPECIAL

## CARBON COLONISED

Can carbon markets combat the climate change crisis?



Scientists join forces to assess climate impact on India's tropical forests

P15

Politics and economics of Africa's mpox epidemic

P44

Misconceptions that obscure Chipko objectives

P48



# DownToEarth

Founded in 1992 to arm you with knowledge critical to shaping a better world

**FOUNDER EDITOR** Anil Agarwal

**EDITOR** Sunita Narain

**MANAGING EDITOR** Richard Mahapatra

**CHIEF COPY EDITOR** Snigdha Das

**ASSOCIATE EDITORS** Aditya Misra, Rajit Sengupta

**SENIOR CREATIVE DIRECTOR** Ajit Bajaj

**SUPPLEMENT EDITOR** Souparno Banerjee

**CHIEF CARTOONIST** Sorit Gupta

**REPORTING TEAM** Shagun, Akshit Sangomla, Pulaha Roy, Rohini Krishnamurthy, Himanshu N

**SENIOR SUB EDITOR** Dakshiani Palicha

**WEB EDITORS** Rajat Ghai, Preetha Banerjee, Nandita Banerji, Pratyaksh Srivastava

**DESIGN TEAM** Chaitanya Chandan (Art Editor), Ritika Bohra (Assistant Art Editor), Tarun Sehgal (Senior Designer), Yogendra Anand (Illustrator), Vineel Tripathi (Graphic Designer), Shri Krishan

**PHOTO EDITOR** Vikas Choudhary

**PRODUCTION** Rakesh Shrivastava, Gundhar Das

**TECH SUPPORT** Rajendra Rawat, Jaidev Sharma

**MULTIMEDIA** Joel Michael, Sunny Gautam, Midhun Vijayan, Shreya KA, Prabhat Kumar, Dhruval Parekh

**INFORMATION AND RESEARCH SUPPORT**

Kiran Pandey, Susan Chacko, Madhumita Paul, Sheeja Nair, Lalit Maurya, Dayanidhi Mishra

**CONSULTING EDITORS** Anumita Roychowdhury, Vibha Varshney

**Vol 33, No 9; Total No of Pages: 60**

Editorial, subscriptions and advertisements:  
Society for Environmental Communications,  
41, Tughlakabad Institutional Area, New Delhi 110 062,

Phone: 91-11-40616000, 29955124,  
29956110, 29956394, 29956399 | Fax: 91-11-29955879,  
Email: editor@downtoearth.org.in

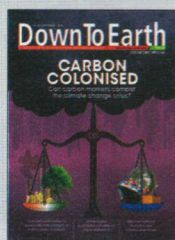
© 2024 Society for Environmental Communications. All rights reserved throughout the world. Reproduction in any manner is prohibited. Printed and published by Richard Mahapatra on behalf of Society for Environmental Communications. Printed at International Print-o-Pac Limited, B-204, 205, Okhla Industrial Area, Phase I,

New Delhi-110020, India, and published at  
41, Tughlakabad Institutional Area, New Delhi 110 062.

To subscribe, sms 'dte Subscribe' to 567070  
or visit [www.downtoearth.org.in/subscription](http://www.downtoearth.org.in/subscription)

**FOR ADVERTISEMENTS** Jyoti Ghosh  
jghosh@cseindia.org

**FOR SUBSCRIPTIONS**  
K C R Raja, raja@cseindia.org

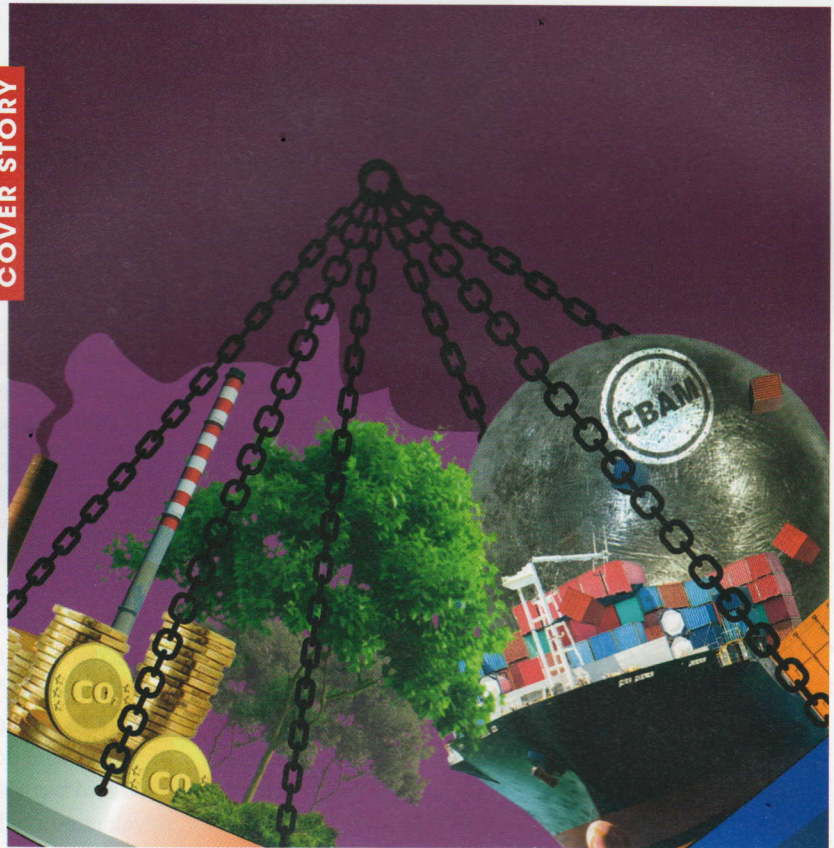


◀ **Cover design:** Ajit Bajaj  
**Cover illustration:**  
Yogendra Anand

# Contents

OZONE DAY SPECIAL

COVER STORY



**20** Creation of carbon markets should not be a diversion from the target of actually reducing emissions

**08** Digest  
Initiative to train, employ women at key positions in faecal sludge plants

**12** Mpox  
Vaccine delay, internal conflict hit Congo's fight against mpox

**15** Tree mortality  
Leaves hold evidence on the future of tropical forests in changing climate

**42** Ozone day special  
Climate change, space programmes the new threats to the ozone layer

**44** Patently Absurd  
Lessons for Africa from global response on mpox outbreak



**48** Opinion  
A relook at the myths of the Chipko movement

**50** Life & Nature  
Local fests, departmental initiatives drive popularity of red jackfruit varieties in south India

**56** Interview  
The Great Nicobar project a big threat to the island, native tribes

**58** Civil Lines  
Jobs, lack of faith in democracy fuel youth anger today



# Digest

WHAT'S INSIDE

Women take charge in faecal sludge treatment plants **P8**

Unusual monsoon pattern skews rainfall distribution **P9**

Centre lifts cap on production of ethanol from sugarcane **P10**

1,000 WORDS VIKAS CHOUDHARY



Fifty-three-year-old fisher Zakir visits the Sahibi river, a tributary of the Yamuna, near the Delhi-Haryana border every day to catch fish. He blames sewage and polluted water for reducing his daily catch to a fraction of the 50-60 kg of fish he would find here two decades ago. Large-scale pollution in the Sahibi has been reported for years due to indiscriminate and illegal dumping of sewage and industrial waste. In recent months, the National Green Tribunal has issued multiple directions to Delhi and Haryana authorities to clean up and restore the river.

FOR MORE PHOTOS, SCAN

