

1-15 AUGUST, 2024

# Down To Earth

FORTNIGHTLY ON POLITICS OF DEVELOPMENT, ENVIRONMENT AND HEALTH

Subscriber copy, not for resale

₹80.00

## Can we make India's agriculture climate resilient?



OLYMPICS SPECIAL  
Athletes bet on  
genetics for boost

P14

MINIMUM SUPPORT PRICE  
Must account for  
agro-ecological  
conditions

P40



# DownToEarth

Founded in 1992 to arm you with knowledge critical to shaping a better world

**FOUNDER EDITOR** Anil Agarwal

**EDITOR** Sunita Narain

**MANAGING EDITOR** Richard Mahapatra

**CHIEF COPY EDITOR** Snigdha Das

**ASSOCIATE EDITORS** Aditya Misra, Rajit Sengupta

**SENIOR CREATIVE DIRECTOR** Ajit Bajaj

**SUPPLEMENT EDITOR** Souparno Banerjee

**CHIEF CARTOONIST** Sorit Gupta

**REPORTING TEAM** Shagun, Akshit Sangomla, Pulaha Roy, Rohini Krishnamurthy, Himanshu N

**SENIOR SUB EDITOR** Dakshiani Palicha

**WEB EDITORS** Rajat Ghai, Preetha Banerjee, Nandita Banerji, Pratyaksh Srivastava

**DESIGN TEAM** Chaitanya Chandan (Art Editor), Ritika Bohra (Assistant Art Editor), Tarun Sehgal (Senior Designer), Yogendra Anand (Illustrator), Vineel Tripathi (Graphic Designer), Shri Krishan

**PHOTO EDITOR** Vikas Choudhary

**PRODUCTION** Rakesh Shrivastava, Gundhar Das

**TECH SUPPORT** Rajendra Rawat, Jaidev Sharma

**MULTIMEDIA** Joel Michael, Sunny Gautam, Midhun Vijayan, Shreya KA, Prabhat Kumar, Dhruval Parekh

**INFORMATION AND RESEARCH SUPPORT** Kiran Pandey, Susan Chacko, Madhumita Paul, Sheeja Nair, Lalit Maurya, Dayanidhi Mishra

**CONSULTING EDITORS** Anumita Roychowdhury, Vibha Varshney

**Vol 33, No 6; Total No of Pages: 60**

Editorial, subscriptions and advertisements: Society for Environmental Communications, 41, Tughlakabad Institutional Area, New Delhi 110 062,

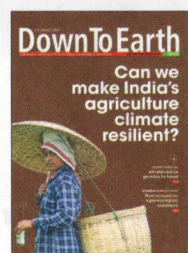
Phone: 91-11-40616000, 29955124, 29956110, 29956394, 29956399 | Fax: 91-11-29955879. Email: editor@downtoearth.org.in

© 2024 Society for Environmental Communications. All rights reserved throughout the world. Reproduction in any manner is prohibited. Printed and published by Richard Mahapatra on behalf of Society for Environmental Communications. Printed at International Print-o-Pac Limited, B-204, 205, Okhla Industrial Area, Phase I, New Delhi-110020, India, and published at 41, Tughlakabad Institutional Area, New Delhi 110 062.

To subscribe, sms 'dte Subscribe' to 56070 or visit [www.downtoearth.org.in/subscribe](http://www.downtoearth.org.in/subscribe)

**FOR ADVERTISEMENTS** Jyoti Ghosh jghosh@cseindia.org

**FOR SUBSCRIPTIONS** K C R Raja, raja@cseindia.org



◀ Cover design: Ajit Bajaj

Down To Earth does not endorse the content of advertisements printed in the magazine. All disputes are subject to the exclusive jurisdiction of competent courts and forums in Delhi/New Delhi only.



COVER STORY

**20** How India can make its farmers resilient to rapidly increasing impacts of climate change

**11** Digest  
What UNEP's foresight report says on emerging planetary challenges

**14** Sports science  
Athletes turn to genetic screening to improve performance

**34** Wildlife management  
Overrun by elephants, Botswana struggles to save people, environment

**40** Debate  
How to rethink Minimum Support Price for agricultural produce

**44** Patently Absurd  
Why patients in India were compelled to fight J&J's patent evergreening bid

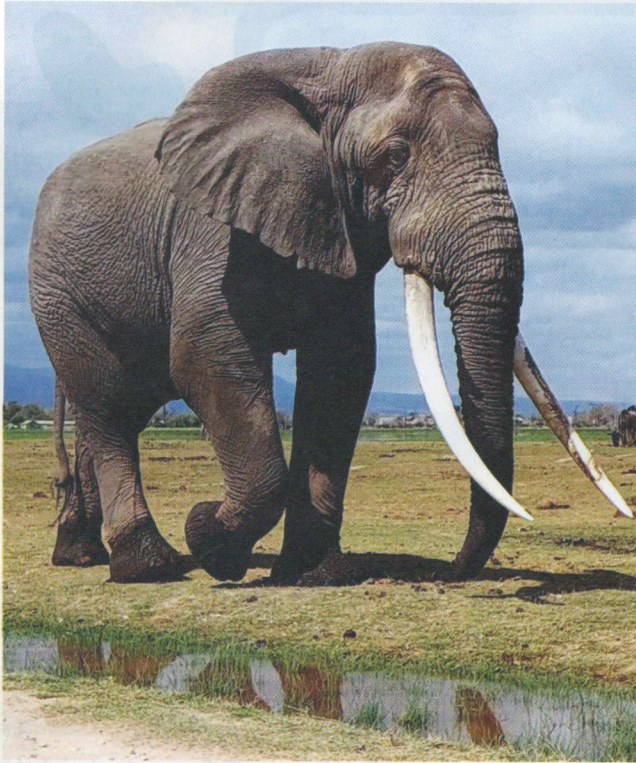


**48** Opinion  
Himachal Pradesh sees surge in heatwaves since 1984; trend shifting from summers to winters

**58** Civil Lines  
Will global warming make parts of the world unliveable by 2035?



# Contents



30

Africa's super tuskers at serious risk after Tanzania lift its ban on trophy hunting in 2022



Unstable profession, rural lifestyle hinders marriage prospects of Karnataka farmers

36



50

NOAA's Derek Manzello on spread and potential impacts of the ongoing global coral bleaching event

54

Javaffava introduces mouth-watering Sri Lankan food in a relatable manner

