



CMIE ProwessIQ Installation

Steps to install the latest version of Prowess IQ on your machine:

1. Visit <https://prowessiq.cmie.com>
2. Use the Download Prowess IQ link on the right panel to download the Prowess IQ setup file
3. Execute the downloaded setup file to install Prowess IQ which will create a shortcut on the desktop.
4. Login with your user name and password to start working on the database.

Home | FAQs  

CMIE ProwessIQ Prowess for Interactive Querying
Most Comprehensive Database on Indian Companies

Financial performance of 38,188 companies

Entre Your Login Credential

Login

Username

Password

[Forgot Password](#) | [Register](#)

CMIE launches ProwessIQ

CMIE's on-going efforts to evolve its products to make them more and more user-friendly and technologically superior resulted in the development of the internet-based version of its classic desktop-based Prowess installation. This internet-based version is christened Prowess for Interactive Querying, Prowess IQ.

The development of ProwessIQ is in response to a long standing demand of Prowess users to port the database from the desktop to the internet without

Subscription service
Monitoring Indian

[Request for Subscription](#)

Alert | Home | My Profile | Feedback | Seek Clarifications | FAQs | Logout 

CMIE ProwessIQ Prowess for Interactive Querying
Most Comprehensive Database on Indian Companies

Financial performance of 38,188 companies

Click On Download

Download
[Dated: 29 Apr'16]
ProwessIQ Software

Download your ProwessIQ user interface for querying the Prowess database of financial performance of companies. You can install it on any computer running on Windows. Download & installation is free. File size: 12.03 MB

Subscription till: 06-04-2017

Account Since Subscription

	Hits
Purchased	15,000
Consumed	6
Balance	14,994

A Database of Business Entities
Prowess is a database of the financials of Indian companies. Annual Reports of companies is the most.. [more ..](#)

ProwessIQ User Interface

22 Mar 2016 9:56 AM

Additions, deletions & updatedness

The Prowess database keeps expanding in terms of the total number of companies covered. There are many reasons why more and more companies will get added to the database. And, there are good reasons why there will be very few deletions. As a result, on a net basis, the count of companies in the Prowess database will keep rising.

Companies keep getting added because new companies are formed regularly. As information on such new companies become available, they get added into the Prowess database. A company gets added into the Prowess database only if it meets the conditions of availability of the audited and complete Annual Report or the availability of the interim financial statements of a listed company.

 **prowessiq_setup**

Double Click On 'prowessiq_setup' To Install

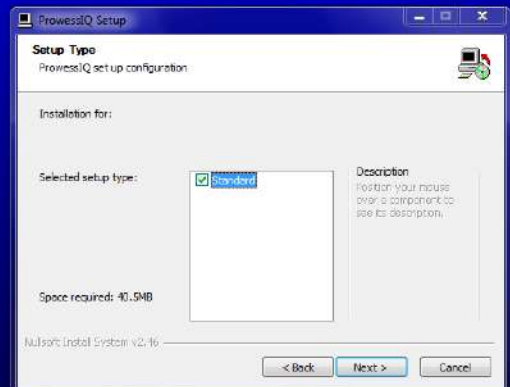
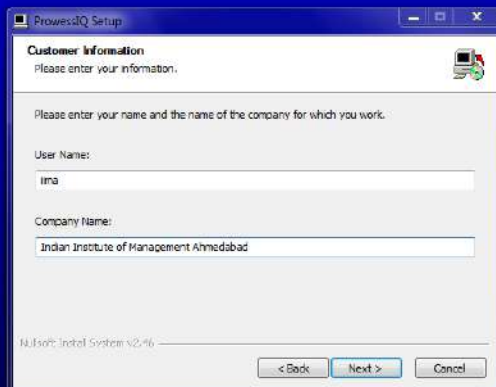
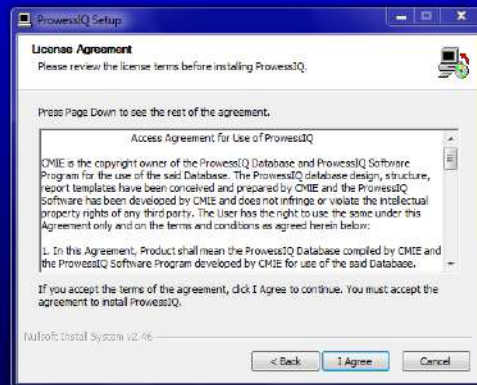
ProwessIQ (1.2)

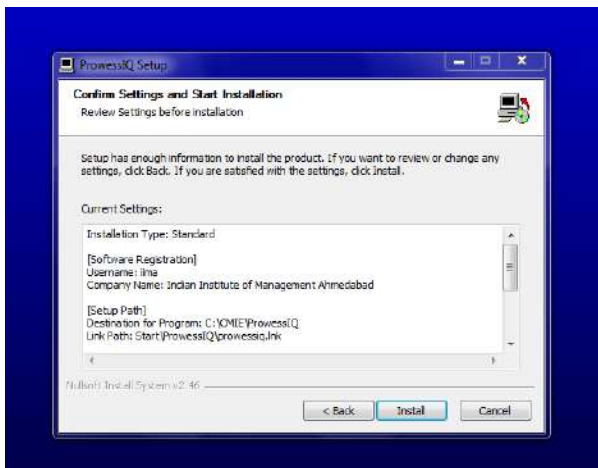
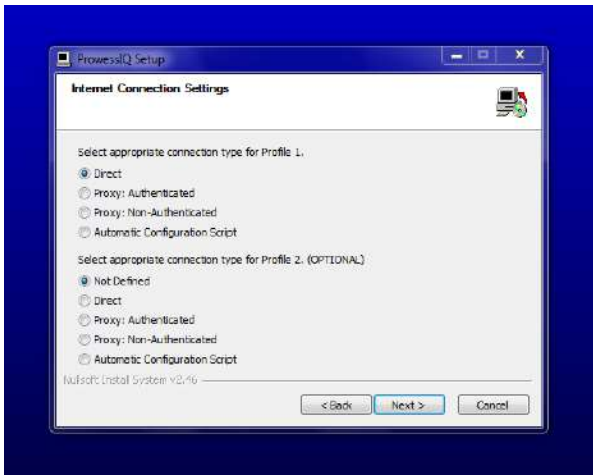
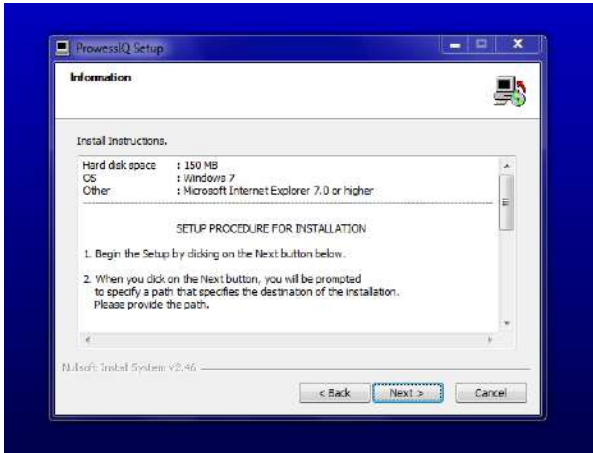
Most Comprehensive Database on Financial Performance of Indian Companies



ProwessIQ (1.2)

Most Comprehensive Database on Financial Performance of Indian Companies





ProwessIQ (1.2)

Most Comprehensive Database on Financial Performance of Indian Companies



Click On ProwessIQ Icon On Desktop

Query Builder Output View Report Viewer/Chart Plotter Work Sheet Commands History and Planner

Trigger Name: Search

History :

Clipboard View Upload / Download File Misc

Clear Status Bar Select a file type : Currency : Annualise OFF

Copy Query Pane Upload Download Exchange : Planner OFF

Paste Freeze Reports Rebad Report Clear Report Cache

NEW OUTPUTS

 Examining your internet settings...

ProwessIQ

Query Builder Output View Report Viewer/Chart Plotter Work Sheet Commands: History and Planner

Trigger Name: Search

History:

Clipboard:

Select a file type:

Currency: Exchange: Observation:

Annualise OFF Planner OFF Freeze Reports

Rebuild Report Clear Report Cache

Refresh To seek clarification on content and operations, visit <http://prowessiq.cmie.com> Queued: 0, Processing: 0 NEW OUTPUTS

ProwessIQ - HTTP Connection Settings

ProwessIQ was unable to access the Internet using the settings in profile 1 and 2. Kindly enter the correct settings below or contact your System administrator to resolve the issue.

Profile1 Profile2

Connection Type:

Automatic Configuration Script:

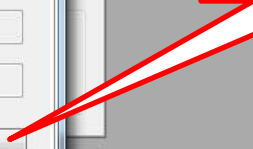
Address: Authenticated Script

IP Address: Username:

Port No: Password:

Test Connection Log

Click On
Discover IE
Connection Settings



ProWessIQ

Query Builder Output View Report Viewer/Chart Plotter Work Sheet Commands History and Planner

Trigger Name: Search

History :

Clipboard View Upload / Download File Misc

Clear Status Bar Select a file type : Currency : Annualise OFF

Copy Query Pane Exchange : Planner OFF

Paste Upload Download Observation : Freeze Reports Reload Report Clear Report Cache

Refresh To seek clarification on content and operations, visit Queued: 0, Processing: 0 NEW OUTPUTS

ProWessIQ - HTTP Connection Settings

ProWessIQ was unable to access the Internet using the settings in profile 1 and 2. Kindly enter the correct settings below or contact your System administrator to resolve the issue.

Profile1 Profile2 Edit Settings

Connection Type : Non-Authenticated

Automatic Configuration Script :

Address : Authenticated Script

IP Address : 192.168.32.1 Username :

Port No : 8080 Password :

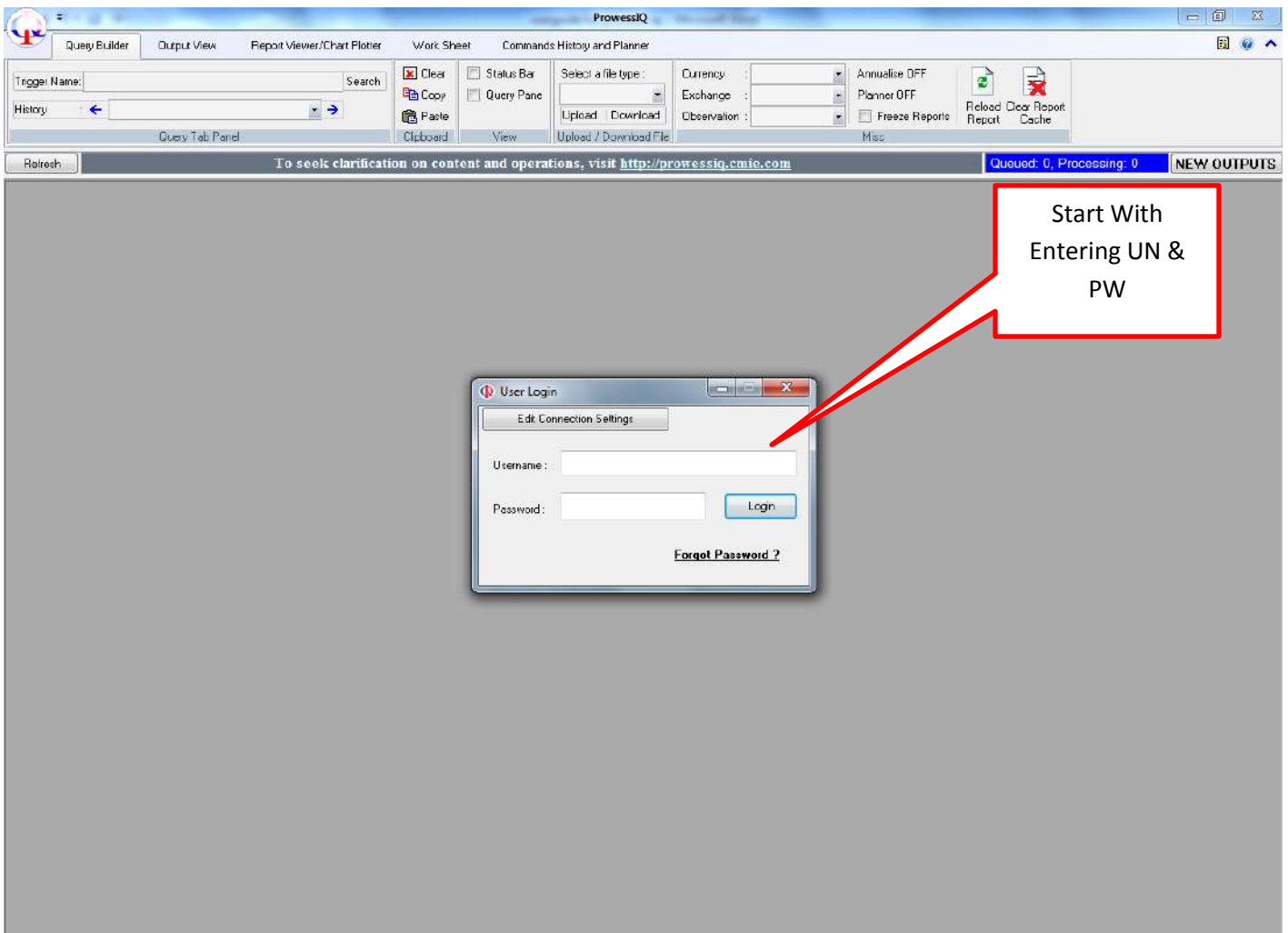
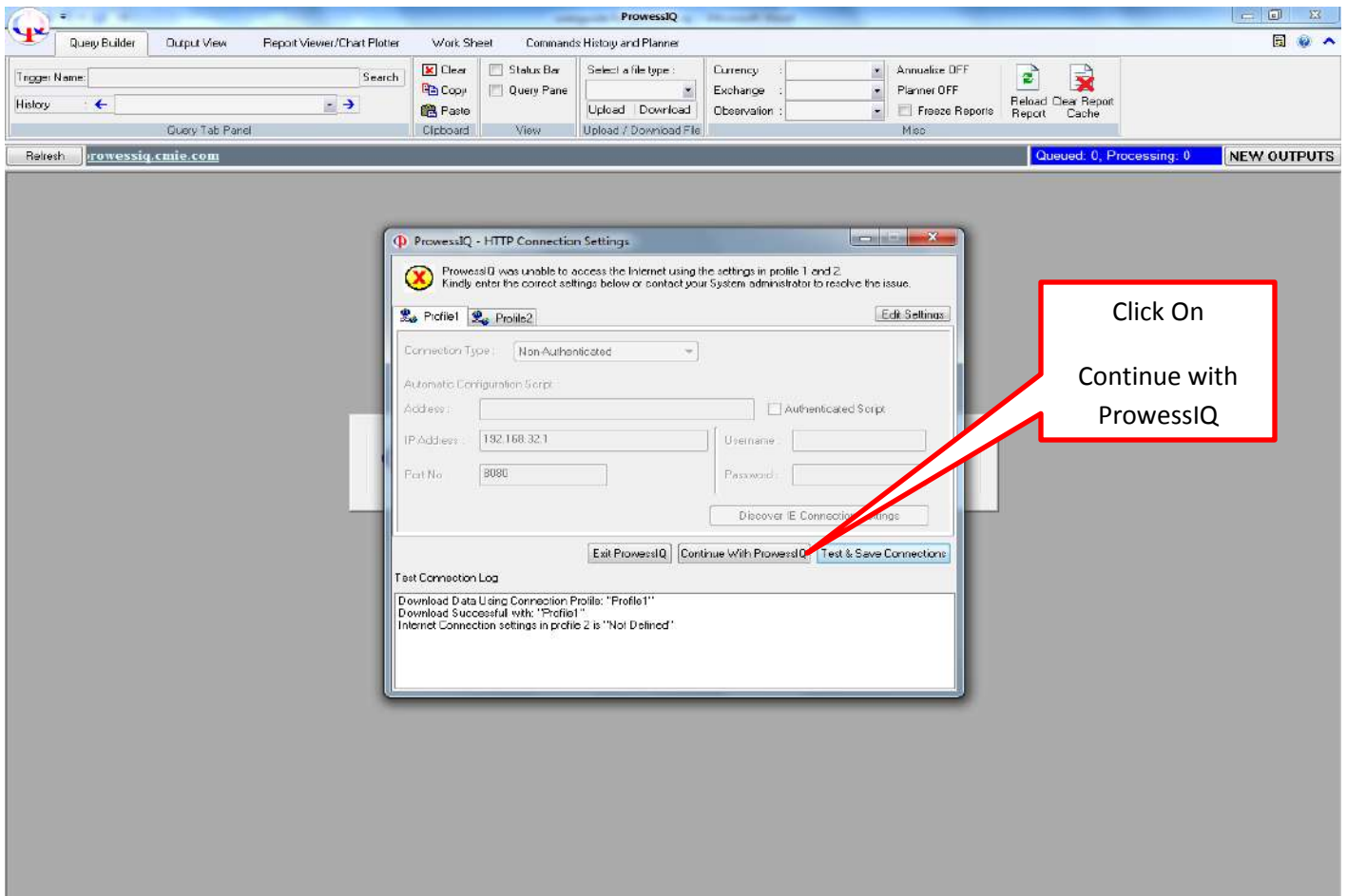
Discover IE Connection Settings

Exit ProWessIQ Continue With ProWessIQ Test & Save Connectors

Test Connection Log

Click On
Test & Save
Connections





Home Page (Query Builder) - ProwessIQ

Ready

Database Timestamp: 07 Jun 2016, (15:35:01) Freeze Reports / Charts PLAN MODE ANNUALISE CAP NUM SCRL